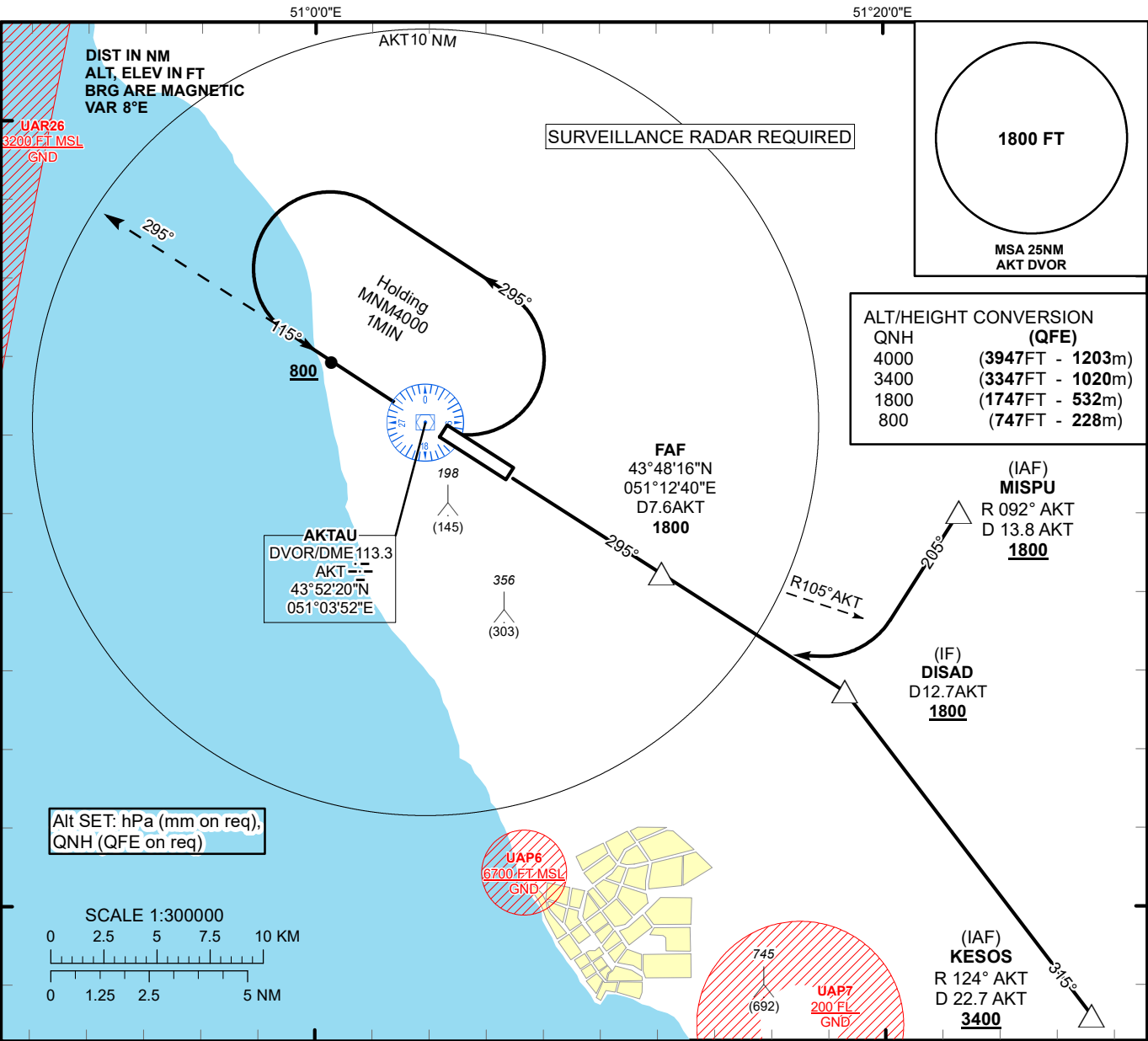


INSTRUMENT
APPROACH
CHART - ICAO

AERODROME ELEV **75 FT**
HEIGHTS RELATED TO
THR RWY 29 - ELEV **53 FT**

AKTAU TOWER 120.7
AKTAU ATIS (EN) 130.1
AKTAU ATIS (RU) 126.2

AKTAU
VOR/DME Y
RWY 29



TRANSITION ALT 10000 FT

MISSED APPROACH

Climb on track 295° to 1800.
After passing 800 radar
vectoring will be provided.
RADIO FAILURE:
In the case of RCF
climb on track 295°
to 1800 outbound to 5.0 AKT.
Turn right, climb to 4000
to AKT and join
to holding pattern.

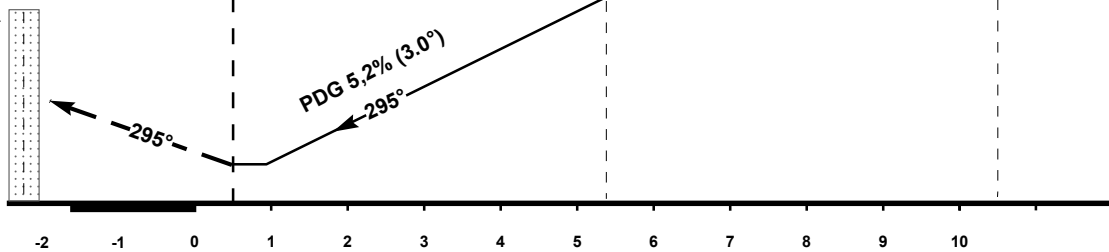
DVOR/DME
AKT

MAPt
D 2.7 AKT

FAF
D 7.6 AKT
1800

IF
DISAD
D 12.7 AKT
1800

ELEV 53
THR RWY 29



Aircraft Category		A	B	C	D	DIST to THR	NM	1	2	3	4	5.4	
Straight-in Approach OCA/H						DME AKT	NM	3.2	4.2	5.2	6.2	7.6	
	VOR/DME	360(310)	360(310)	360(310)	360(310)	ALTITUDE	FT	420	739	1057	1376	1800	
						HEIGHT	FT	367	686	1004	1323	1747	
Aerodrome Operating Minima MDH ft x RVR(CMV)	VOR/DME												
						GS	Kt	80	100	120	140	160	180
						Desc. Rate (5.2%)	ft/min	420	530	630	740	840	950
						FAF-MAPt (4.9 NM)	min:sec	3:41	2:56	2:27	2:06	1:50	1:38

AKTAU
VOR/DME Y

AERONAUTICAL DATA TABULATION

VOR/DME approach to RWY29 from MISPU, DISAD, KESOS	
Fix/point	Coordinates
AKT DVOR/DME	43° 52' 20.3"N 051° 03' 51.9"E
(FAF) D7.6 AKT	43° 48' 15.6"N 051° 12' 39.5"E
MISPU (IAF) R092° AKT D13.8	43° 50' 01.9"N 051° 22' 37.0"E
DISAD (IF) AKT D12.7	43° 45' 28.9"N 051° 18' 35.4"E
KESOS (IAF) R124° AKT D22.7	43° 37' 13.0"N 051° 27' 13.0"E
THR RWY 29	43° 51' 09.72"N 051° 06' 24.49"E
Final approach descent angle is 3°	